



Materials for dental laboratories

A solution to meet all your needs

Materials

Zirconium oxide	
	DC-Zirkon 6
	DC-Zirkon col. 7
	DC-Shrink 8
	DC-Leolux 10
Aluminium oxide	
	DC-Procura 11
Dental ceramics	
	DC-Cristall 12
	DC-Cream 13
Metals	
	DC-Titan 14
	DC-Croco 15
Plastics	
	DC-Tell 16
Millable wax	
	DC-Cast 17

Recommended aids

	DC-Liner 18
	DC-Cor 19
Products references	20



A solution to



meet all your needs

Bien-Air Laboratory Section offers a range of 10 different established materials for CAD-CAM.

The «latest» material, DC-Croco, is an industrially manufactured and proven cobalt base alloy for producing crown and bridge frameworks.

Apart from the classic DC-Zirkon HIP, which has been on the market since 1993 and is used for a variety of indications, three marketable and proven alternatives are available for zirconium oxide indications with the pre-sintered zirconium DC-Shrink and the densely sintered DC-Leolux.

The all-ceramic range leaves no wishes unfulfilled with the aluminium oxide DC-Procura, which can be veneered immediately after machining. Glass ceramics such as DC-Cristall and DC-Cream round off the all-ceramic product range.

The metal side is covered by DC-Titan as monometal with the bio-oxide layer

and DC-Croco in the range of alloys free of precious metals. Increasingly popular as a sign of the times, the lower price segment: longterm temporary restorations made of DC-Tell, the glass fibre reinforced high performance plastic and of DC-Cast, the plastic for the casting technique, which has been offered since 2002.

Especially the densely sintered DC-Zirkon with subsequent HIP process continues to be a real sales success because of its aesthetics, high load capacity and yet outstanding machinability. Reports of crack formation during the milling process, high tool wear and long machining times could not stop this triumphant progress and have been corrected by everyday experience and various studies at universities. Especially with regard to the longer machining times compared with presintered zirconia, it is frequently forgotten that pre-sintered zirconia must be densely sintered for several hours in separate high temperature furnaces after the machining process.



DC-Zirkon

The ceramic optimum

The material

Thanks to its extraordinary mechanical properties, DC-Zirkon is ideally suited for long span bridges. DC-Zirkon is made of HIPed, polycrystalline, tetragonal zirconium dioxide. It is the solution for numerous dental problems.

Indications

DC-Zirkon is primarily used to manufacture long-spanned, all-ceramic bridge restorations. Up to 14-units bridges with 3 pontics (posteriors) are possible.

Biocompatibility

Zirconium dioxide is successfully used in implantology since several years and has been authorized, among others, by the USA's Food and Drug Administration (FDA).

Processing

The blank is machined in accordance with the manufacturer's instructions. For veneering, suitable ceramic materials are used (e.g. zirconium ceramic materials). Conventional or adhesive cementation can be used.

DC-Zirkon – and the medical device legislation

A great benefit of CAM technology is the ability to machine industrially produced and optimized materials (HIPed Zircon). Scanning, machining and then veneering – by avoiding intermediate steps that compromise quality – do not alter the material's characteristics, whereby the regulatory requirements for medical devices remain fulfilled.

All-ceramic bridges made of DC-Zirkon have proven themselves

In a prospective study at the Clinic for Dental Prosthetics of the University Clinic of the Aachen University of Technology, the clinical reliability of anterior and posterior bridges made of DC-Zirkon was investigated for the first time over a mean observation period of 5 years. In total 159 zirconium oxide bridges were under observation. In the follow-up examinations only one framework fracture



DC-Zirkon col.

The coloured version

and four cases of partial veneer spalling off occurred. The study results showed that bridges made of DC-Zirkon fulfil the classical requirements and represent a treatment suitable for the practice. [ZWR 116, 58 (2007)]

The coloured DC-Zirkon

To accompany the tried and tested DC-Zirkon, a tooth-coloured version is available since 2008. According to experts in this field, its characteristics offer no significant difference to standard DC-Zirkon.

Properties DC-Zirkon

ZrO ₂ /Y ₂ O ₃	95/5 %
Purity (Zr/Hf/Y)	99.9 %
Flexural strength	1200 MPa
Hardness, Vickers	1200 HV
Chemical solubility	<100 µg/cm ²
Compression resistance	2000 MPa
Coefficient of thermal expansion	
25 - 500°C	10 x 10 ⁻⁶ /K
Colour	white

Properties DC-Zirkon col.

Flexural strength	approx. 1200 MPa
Hardness, Vickers	approx. 1200 HV
Chemical solubility	<100 µg/cm ²
Coefficient of thermal expansion	
25 - 500°C	10 x 10 ⁻⁶ /K
Colour	tooth coloured



DC-Shrink

The soft zirconium oxide

The material

DC-Shrink is a zirconium oxide with a consistency as soft as chalk, which makes it extremely easy to machine. It has to be sintered in the dental laboratory to increase its density. Quality criteria such as HIP do not apply.

Indications

In modern dentistry, pre-sintered zirconium oxide is suitable for the fabrication of single-tooth restorations and small bridgework with up to two pontics. The material's properties are such that larger restorations can also be considered.

Biocompatibility

The advantages of HIP zirconium oxide have already been amply demonstrated in the field of medicine, for example in hip joint implantology and also as root posts. Its biocompatibility is regarded as exceptionally good. Zirconium oxides like DC-Shrink are the right choice for long term restorations in the form of small bridgework and single crowns.

Handling

The blank is machined following the manufacturer's instructions, and finished with suitable veneering ceramics for zirconium oxide. Cementation is carried out either in the conventional manner or adhesively. For dense sintering, a furnace (at up to approx. 1,600°C) is essential. Based on tests, the ZYrcomat (from Vita Zahnfabrik, Bad Säckingen, Germany) is recommended.



DC-Shrink – and the medical device legislation

A major advantage offered by the CAM technology employed is the ability to machine industrially produced and optimised materials. Scanning, milling and then veneering are the only steps needed. The risks of additional steps such as dense sintering or the absence of HIP must be critically evaluated by the laboratory for each individual case. If in doubt, we recommend using DC-Zirkon, as this eliminates intermediate steps which may reduce quality, and the defined material properties are preserved, thus fulfilling the regulatory requirements for medical devices.

Properties DC-Shrink **

ZrO ₂ /Y ₂ O ₃	95/5 %
Purity (Zr/Hf/Y)	99.9 %
Flexural strength	1000 MPa*
Hardnessk, Vickers	1200 HV*
Compression resistance	2000 MPa*
Coefficient of thermal expansion	
25 - 500°C	10 x 10 ⁻⁶ /K*
Colour	white

** All properties are indicative values

* The stated values refer to the condition following the sintering process. These material properties of the work in question must be ensured solely by the laboratory commissioned.



DC-Leolux

The economical ceramic

The material

DC-Leolux has high strength whilst still having attractive machining properties. This facilitates shorter production times than DC-Zirkon. A critical base is ideally covered by the slightly translucent framework.

Indications

DC-Leolux is extremely suitable for the fabrication of frameworks of up to three-unit bridges. Single posterior tooth restorations can also be fabricated easily.

Biocompatibility

The material exclusively contains components which have been in use for many years in dentistry. DC-Leolux is thus ideal for the daily clinical use. Instances of intolerance are not known.

Processing

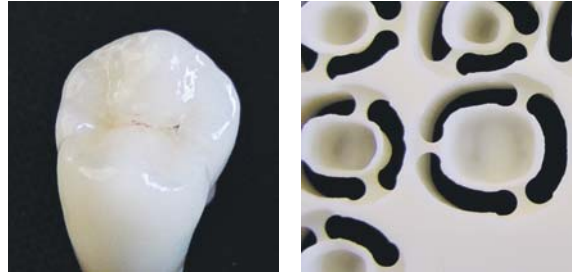
The blank is machined in accordance with the manufacturer's instructions. For veneering, suitable ceramic materials are used. Adhesive or conventional cementation can be used.

DC-Leolux – and the medical device legislation

A great benefit of CAM technology is the ability to machine industrially produced and optimized materials. Scanning, milling and then veneering – by avoiding intermediate steps that compromise quality – do not alter the material's characteristics, whereby the regulatory requirements for medical devices remain fulfilled.

Properties DC-Leolux

Dental ceramics, type II, class 5	
Flexural strength	550 MPa
Chemical solubility	<100 µg/cm ²
Coefficient of thermal expansion	
25 - 500°C	10 x 10 ⁻⁶ /K
Density	5.5 g/cm ³
Colour	whitish



DC-Procura

CAD-CAM-optimised aluminium oxide

The material

DC-Procura possesses the good mechanical properties characteristics of pure aluminium oxide, combined with ease of machining. This enables crown frameworks to be fabricated quickly and economically. The translucent, slightly tooth coloured frameworks mean high quality aesthetics are guaranteed.

Indications

DC-Procura is ideal for producing crown frameworks for anterior and posterior teeth. Bridge constructions are not indicated.

Biocompatibility

DC-Procura consists of high-purity aluminium oxide (> 99%), which has been successfully used in the field of medicine for many years. It is thus perfectly suited for use in routine clinical practice. Instances of intolerance are not known.

Processing

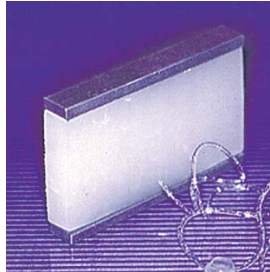
The blank is machined following the manufacturer's instructions, and finished with veneering ceramics for aluminium oxide frameworks. Cementation is carried out either in the conventional manner or adhesively.

DC-Procura – and the medical device legislation

A great benefit of CAM technology is the ability to machine industrially produced and optimized materials. Scanning, milling and then veneering – by avoiding intermediate steps that compromise quality – do not alter the material's characteristics, whereby the regulatory requirements for medical devices remain fulfilled.

Properties DC-Procura

Dental ceramic, type II, class 3	
Purity (Al ₂ O ₃)	>99 %
Flexural strength	300 MPa
Chemical solubility	<100 µg/cm ²
Coefficient of thermal expansion	
25 - 500°C	8 x 10 ⁻⁶ /K
Density	3.9 g/cm ³
Colour	light orange



DC-Cristall

The translucent ceramic

Indications

DC-Cristall is particularly suitable for manufacturing individual crown frameworks and veneers for vital teeth. Because of its specifications, the material is not suitable, however, for bridge restorations.

Biocompatibility

Since the composition of the material matches that of typical dental ceramics, DC-Cristall is thus ideal for the daily clinical use. Instances of intolerance are not known.

Processing

The blank is machined in accordance with the manufacturer's instructions. For veneering, suitable ceramic materials are used (for example titanium ceramic materials). Only adhesive cementation.

DC-Cristall – and the medical device legislation

A great benefit of CAM technology is the ability to machine industrially produced and optimized materials. Scanning, milling and then veneering – by avoiding intermediate steps that compromise quality – do not alter the material's characteristics, whereby the regulatory requirements for medical devices remain fulfilled.

Properties DC-Cristall

Dental ceramics, type II, class 1	
Flexural strength	>100 MPa
KIC	1 MPa m ^{0.5}
Chemical solubility	<90 µg/cm ²
Coefficient of thermal expansion	
25 - 500°C	9 x 10 ⁻⁶ /K
Transformation temperature	650°C
Softening temperature	750°C
Density	2.5 g/cm ³
Colour	white-translucent



DC-Cream

The tooth-coloured Basis

The material

DC-Cream's properties make it perfect for the fabrication of single tooth frameworks. The material is tooth-colored. Relatively space-saving veneering is thus possible, which benefits the framework thickness.

Indications

DC-Cream is optimally suited to the fabrication of frameworks for single crowns. The material is not suitable for bridge constructions due to its specifications.

Biocompatibility

The material exclusively contains components which have been successfully in use for many years in dentistry. DC-Cream is thus ideal for the daily clinical use. Instances of intolerance are not known.

Processing

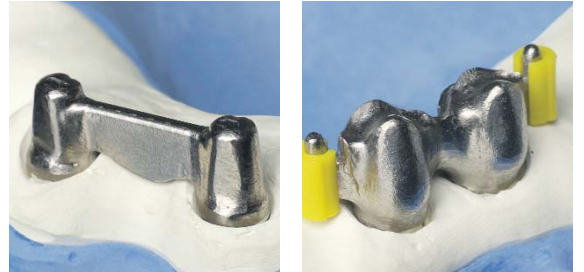
The blank is machined in accordance with the manufacturer's instructions. For veneering, suitable ceramic materials are used (e.g. titanium ceramic materials). Only adhesive cementation.

DC-Cream – and the medical device legislation

A great benefit of CAM technology is the ability to machine industrially produced and optimized materials. Scanning, milling and then veneering – by avoiding intermediate steps that compromise quality – do not alter the material's characteristics, whereby the regulatory requirements for medical devices remain fulfilled.

Properties DC-Cream

Dental ceramics, type II, class 2	
Flexural strength	Env. 120 MPa
Chemical solubility	<500 µg/cm ²
Coefficient of thermal expansion approx.	
25 - 500°C	approx. 9 x 10 ⁻⁶ /K
Transformation temperature	approx. 650°C
Softening temperature	approx. 750°C
Density	approx. 2.5 g/cm ³
Colour	tooth-coloured



DC-Titan

The lightweight metal

The material

The DC-Titan blank is an industrially produced block of pure titanium. Titanium is a tried-and-tested metal for the production of crown and bridge frameworks. The traditional veneering with ceramic or resin meets the aesthetic requirements in every aspect.

Indications

DC-Titan is preferably used for traditional crown and bridge work and for rehabilitation of allergic patients.

Biocompatibility

The biocompatibility of pure titanium has been extensively described in the scientific literature. In addition to its biocompatibility, titanium's other outstanding properties include low thermal conductivity, high wearer comfort thanks to the low weight, taste neutrality and X-ray transparency.

Processing

The blank is machined in accordance with the manufacturer's instructions. For veneering, suitable titanium porcelains are used. Cementation preferably using phosphate cement.

DC-Titan – and the medical device legislation

A great benefit of CAM technology is the ability to machine industrially produced and optimized materials. Scanning, milling and then veneering – by avoiding intermediate steps that compromise quality – do not alter the material's characteristics, whereby the regulatory requirements for medical devices remain fulfilled.

Properties DC-Titan

Composition	Pure titanium
	Grade 2
Melting point	1668°C
Hardness, Vickers	180 HV
0.2% yield strength	275-450 MPa
Tensile strength	>350 MPa
Elongation	>20%
Density	4.5 g/cm ³
Coefficient of thermal expansion	
25 - 400°C	9.4 x 10 ⁻⁶ /K
Elasticity modulus	110 GPa



DC-Croco

The CAD-CAM steel

The material

DC-Croco is an industrially produced blank made of a cobalt chrome alloy. The alloy concerns a well-known and tried and tested metal alloy for producing crown and bridge frames. The classical cover with ceramic fully satisfies the aesthetic demands.

The indication fields

DC-Croco is suitable for all typical cobalt basis applications. Single caps and bridge frames in absolute quality are possible.

Biocompatibility

The material exclusively contains substances and parts which have been used successfully in the dental field for many years. The material is nickel free. Thus, DC-Croco is highly suitable for the daily work in clinics. As with all cobalt-chrome alloys, there may however be allergic reactions. A sensitivity test is to be carried out in individual cases.

Processing

The blank is processed in accordance with the manufacturer's instructions. Suitable conventional ceramic masses are used for covering. These are mounted in the conventional manner.

DC-Croco – and the medical device legislation

A great benefit of CAM technology is the ability to machine industrially produced and optimized materials. Scanning, milling and then veneering – by avoiding intermediate steps that compromise quality – do not alter the material's characteristics, whereby the regulatory requirements for medical devices remain fulfilled.

Properties DC-Croco

Expansion	10 %
0.2% yield strength	570 MPa
Hardness, Vickers	286 HV
Elasticity modulus	194 GPa
Solidus temperature	1309°C
Liquidus temperature	1417°C
Density	approx. 8 g/cm ³
Thermal expansion coefficient	
25 - 500°C	14.1 x 10 ⁻⁶ /K
Colour	silver
Composition	Co 64 % / Cr 21 %
	W 6 % / Mo 6 %
	Rest: C, Si, Fe, Mn



DC-Tell

The high-performance composite

The material

The starting point for the development of DC-Tell was the demand for aesthetically attractive, metal-free dental restorations at affordable prices. DC-Tell, a polyamide reinforced with short glass fibers, will meet your requirements in all these respects.

Indications

Thanks to its properties, DC-Tell is extremely versatile in its use: metal-free restorations in allergic patients, implantology (progressive bone building), long-term temporaries for the rehabilitation of temporomandibular joint problems, prosthetics in the elderly, and in traditional crown and bridge work.

Biocompatibility

The biocompatibility and the bonding strength between DC-Tell and resin veneering material have been investigated at the University of Freiburg by Professor Dr. H. F. Kappert and Dr. G. Henning, Dental Engineering Basel and were confirmed to be outstanding compared to other products (ISO standard 10477).

Processing

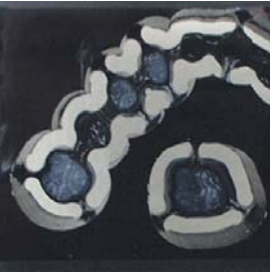
The blank is machined in accordance with the manufacturer's instructions. For veneering, light-curing composites are used. Cementation preferably fixed using glass-ionomer cement or adhesive.

DC-Tell – and the medical device legislation

A great benefit of CAM technology is the ability to machine industrially produced and optimized materials. Scanning, milling and then veneering – by avoiding intermediate steps that compromise quality – do not alter the material's characteristics, whereby the regulatory requirements for medical devices remain fulfilled.

Properties DC-Tell

Density	1.69 g/cm ³
Elasticity modulus	22 000 MPa
Flexural strength	380 MPa
Solubility	< 1 µg/mm ³
Melting point	260°C
Water absorption	30.2 µg/mm ³
Max. working temperature (continuous)	100 - 120°C
Max. working temperature (short-term)	180°C



DC-Cast

The machinable wax

The material

DC-Cast is an aid for the fabrication of shaped parts. DC-Cast is a black acrylic polymer which burns out leaving no residue. Due to its high strength compared to wax there are no distortions even with large spans.

Indications

The parts produced can be used directly, for example, for the production of prototypes or when casting, as an alternative to wax. The parts made from DC-Cast can be modified using wax or completed with any standard element used in traditional casting. For the first time DC-Cast combines the advantages of the CAD/CAM method with conventional casting technology. Logistical problems of precious metal alloys are thus elegantly solved. In addition, if any casting problem occurs, there is no need to redo the wax modeling, just machine the shape again.

Processing

The blank is machined in accordance with the manufacturer's instructions. Similar to wax, DC-Cast can be burned out leaving no residue. Use sufficient exhaust and follow the local and national regulations.

DC-Cast – and the medical device legislation

DC-Cast is a class 1 medical device, in accordance with European Directive 93/42/E. Clinical use (max. 60 min. in mouth) is permitted.

DC-Liner

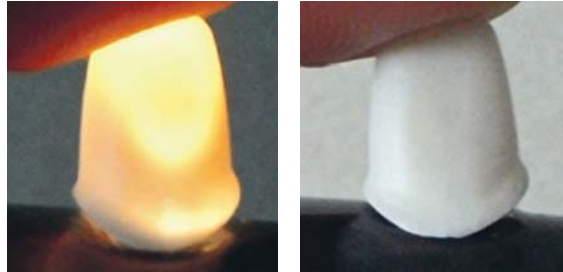
The art of detail

When bonded to zirconium oxide, DC-Liner gives the underlying material a natural and fluorescent appearance. The whitish-translucent zirconium surface primed with DC-Liner provides the ideal base for dental restorations with excellent aesthetics. DC-Liner is made from highgrade dental ceramics on the basis of carefully selected top-quality raw materials. DC-Liner is the obvious choice whenever zirconium oxide frameworks are to be veneered.



According to the tooth colour, the following materials are recommended

DC-Liner Z1	light tooth colours
DC-Liner Z2	light, reddish tooth colours
DC-Liner Z3	light, yellowish tooth colours
DC-Liner Z4	light, brownish tooth colours
DC-Liner Z5	bright/intense tooth colours
DC-Liner Z6	«grey» for toning down



The same crown made of zircon oxide with DC-Cor in the cervical area.
Left crown: internal light source. Right crown: daylight.

DC-Cor

For perfect finishing

DC-Cor is a thermoplastic that is used for correcting small margin step defects in zirconium frameworks and enhancing the finish. Such defects can occur, for example, as a shrinkage gap with zirconium oxide margin materials. In addition, small marginal damage, which may occur with any of the green body materials on the market, can be professionally removed. The material consists of a dental ceramic designed specifically for use on zirconium oxide frameworks, and is homogeneously enveloped in a high-quality binder, which is responsible for the thermoplastic properties. The perfect compatibility of the two components makes for easy handling. At the development stage, high firing temperatures were assumed in order to permit framework optimisation prior to veneering.

DC-Cor is available with white or red binder, enabling the places to which it is applied to be marked. After firing, the appearance

of the two products is identical. DC-Cor is an aid to margin optimisation. It can also be used to advantage for correcting other defects (e.g. closing minor damage or thickening of the framework surface).

Important:

Areas relevant to the strength of the framework (e.g. connectors) may only be treated with DC-Cor after first ensuring that the structural stability will not be adversely affected. Corrected areas do not have the same strength as stabilised zirconium oxide!

Product references and designations

Page	Order No.	Designation	Packaging
Blanks			
6		DC-Zirkon	
	0410.00500	80 x 50 x 8	1 pce
	0410.00501	80 x 50 x 10	1 pce
	0410.00502	80 x 50 x 12	1 pce
	0410.00503	80 x 50 x 13.5	1 pce
	0410.00504	80 x 50 x 15	1 pce
7		DC-Zirkon col.	
	0410.00510	80 x 50 x 8	1 pce
	0410.00511	80 x 50 x 10	1 pce
	0410.00512	80 x 50 x 12	1 pce
	0410.00513	80 x 50 x 13.5	1 pce
	0410.00514	80 x 50 x 15	1 pce
8		DC-Shrink	
	0410.00754	80 x 50 x 15	1 pce
	1501168-001	Ø 90 x 15mm	1 pce
	1501169-001	Ø 90 x 20mm	1 pcs
10		DC-Leolux	
	0410.00562	80 x 50 x 12	1 pce
	0410.00564	80 x 50 x 15	1 pce
11		DC-Procura	
	0410.00520	80 x 50 x 8	1 pce
	0410.00521	80 x 50 x 10	1 pce
	0410.00522	80 x 50 x 12	1 pce
	0410.00523	80 x 50 x 13.5	1 pce
	0410.00524	80 x 50 x 15	1 pce
12		DC-Cristall	
	0410.00552	80 x 50 x 12	1 pce
13		DC-Cream	
	0410.00702	80 x 50 x 12	1 pce
14		DC-Titan	
	0410.00012	80 x 50 x 8	1 pce
	0410.00004	80 x 50 x 10	1 pce
	0410.00005	80 x 50 x 12	1 pce
	0410.00006	80 x 50 x 13.5	1 pce
	0410.00007	80 x 50 x 15	1 pce
	1501172-001	Ø 90 x 8mm	1 pce
	1501173-001	Ø 90 x 10mm	1 pce
	1501174-001	Ø 90 x 12mm	1 pce
	1501175-001	Ø 90 x 13.5mm	1 pce
	1501176-001	Ø 90 x 15mm	1 pce
	1501178-001	Ø 90 x 20mm	1 pce
15		DC-Croco	
	0410.00024	80 x 50 x 12	1 pce
	0410.00026	80 x 50 x 15	1 pce
16		DC-Tell	
	0410.01500	80 x 50 x 15	1 pce
	1501170-001	Ø 90 x 15mm	1 pce
	1501171-001	Ø 90 x 20mm	1 pce
17		DC-Cast	
	0410.00994	80 x 50 x 15	1 pce
	1501156-001	Ø 90 x 15mm	1 pce
	1501157-001	Ø 90 x 20mm	1 pce

Product references and designations

Page Order No. Designation Packaging

End mill & Burs

Carbide End mill		
0420.00000	1mm	5 pcs
0420.00001	1,5mm	5 pcs
0420.00002	2mm	5 pcs
0420.00003	3mm	5 pcs
Diamond burs		
0420.01010	1mm	5 pcs
0420.01001	1,5mm	5 pcs
0420.01002	2mm	5 pcs
0420.01004	3mm	5 pcs
0420.01006	5mm	5 pcs
DC-Croco End mill		
0420.02001	1mm	5 pcs
0420.02002	1.5mm	5 pcs
0420.02003	2mm	5 pcs
0420.02004	3mm	5 pcs

Recommended adjuvants

DC-Liner		
0440.90000	DC-Liner Set	1 set
contains: DC-Liner Z1, Z3, Z5, Z6, 2 x Fluide		
0440.90010	DC-Liner Z1 - light	10g
0440.90011	DC-Liner Z2 - reddish	10g
0440.90012	DC-Liner Z3 - yellowish	10g
0440.90013	DC-Liner Z4 - brownish	10g
0440.90014	DC-Liner Z5 - Bright/intensive	10g
0440.90015	DC-Liner Z6 - grey	10g
0440.90020	DC-Liner Fluid colored	15ml
0440.90021	DC-Liner Fluid clear	15ml
DC-Cor		
0410.00540	DC-Cor white	2 blanks
0410.00541	DC-Cor red	2 blanks
0410.00530	Zirkonoxid test tablets	10 pcs
0440.00150	Coolant fluid	5 litres
0450.10022	Anti-foam	1 litre
0440.10002	Filter bag100µm	1 pce

The following products are registered trademarks that are property of Bien-Air Dental SA:

DC-Zirkon®	DC-Zirkon® col.	DC-Shrink®
DC-Leolux®	DC-Procura®	DC-Cristall®
DC-Cream®	DC-Titan®	DC-Croco®
DC-Tell®		DC-Cast®

Bien-Air Dental SA
Länggasse 60
Case postale
2500 Bienne 6, Switzerland
Tel. +41 (0)32 344 64 64
Fax +41 (0)32 344 64 91
dental@bienair.com

Bien-Air
Deutschland GmbH
Jechtinger Straße 11
79111 Freiburg, Deutschland
Tel. +49 (0)761 45 57 40
Fax +49 (0)761 47 47 28
ba-d@bienair.com

Bien-Air España SA
Entença, 169 Bajos
08029 Barcelona, España
Tel. (+34) 934 25 30 40
Fax (+34) 934 23 98 60
ba-e@bienair.com

Bien-Air USA, Inc.
Medical Technologies
5 Corporate Park
Suite 160
Irvine, CA 92606, USA
Phone 1-800-433-BIEN
Phone 949-477-6050
Fax 949-477-6051
ba-usa@bienair.com

Bien-Air France Sàrl
55-57, avenue Jean Lolive
93500 Pantin, France
Tel. +33 (0)1 41 83 60 70
Fax +33 (0)1 48 96 07 40
ba-f@bienair.com

Internet:
www.bienair.com

Bien-Air Italia s.r.l.
Via Vaina 3
20122 Milano, Italia
Tel. +39 (02) 58 32 12 51/52/54
Fax +39 (02) 58 32 12 53
ba-i@bienair.com

Bien-Air UK Limited
63, The Street
Capel, Surrey RH5 5JZ, England
Tel. +44 (0)1306 711 303
+44 (0)1306 712 505
Fax +44 (0)1306 711 444
ba-uk@bienair.com

Bien-Air Asia Ltd.
Nishi-Ikebukuro
Daiichi-Seimei Bldg. 10F
2-40-12 Ikebukuro, Toshimaku
Tokyo, 171-0014, Japan
ビエン・エア・アジア株式会社
〒171-0014
東京都豊島区池袋2-40-12
西池袋第一生命ビルディング10F
Tel. +81 (3) 5954-7661
Fax +81 (3) 5954-7660
ba-asia@bienair.com

Beijing Bien-Air
Medical Instrument
Technology Service Co. Ltd.
Room 907, The Exchange Beijing,
No 118 Jian Guo Lu Yi,
Chao Yang District,
Beijing 100022, China
北京彼岸医疗器械
技术有限公司
北京市朝阳区建国路
乙118号招商局中心
京汇大厦907室
电话: +86 10 6567 0651
传真: +86 10 6567 8047
ba-beijing@bienair.com